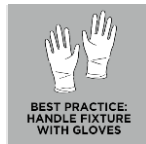
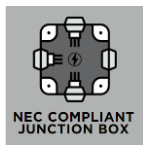
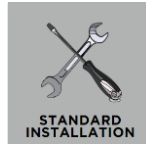


## DUNTON SMALL, MEDIUM, LARGE, &amp; X-LARGE VANITIES

GLV1111; GLV1112; GLV1113; GLV1114

## General Product Information



Product Warranty



FCC Statement

## Suggested/Required Tools



## Safety Information

## CAUTION-RISK OF FIRE

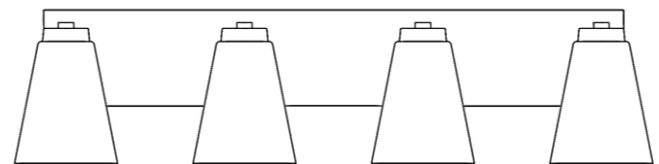
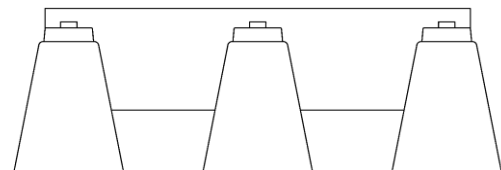
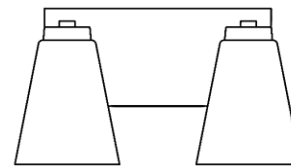
This product must be installed in accordance with the applicable installation code by a person familiar with the construction and operation of the product and the hazards involved.

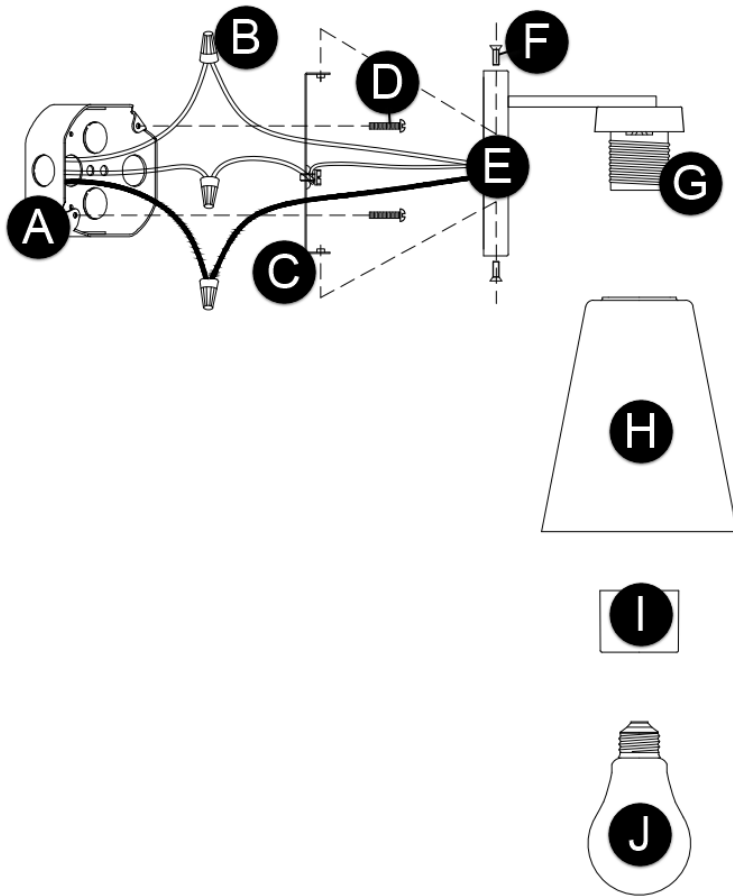
USE MINIMUM 90°C SUPPLY CONDUCTORS.



Turn off electrical current at the source before working with any lighting fixture or portable lamp.

Install and use this product in adherence with local electrical codes and regulations.





## FIXTURE PARTS

- A. Junction Box
- B. Wire Nut Connections
- C. Mounting Plate
- D. Mounting Screws
- E. Fixture Base
- F. Fixture Screws
- G. Socket(s)
- H. Shade(s)
- I. Shade Collar(s)
- J. Bulb(s) (Not Included)
- K. Anchors & Anchor Screws (GLV1112, GLV1113, GLV1114 Only; Not Illustrated)

## INSTRUCTIONS

### **I. Preparing the Fixture**

1. Separate the mounting plate from the fixture base.
2. For GLV1111, secure the mounting plate to the junction box with the mounting screws.
3. For GLV1112, GLV1113, and GLV1114 only, install the anchors as follows:
  - a) Place the mounting plate on the junction box to trace and mark the locations for the anchor holes. Ensure that they are level.
  - b) Use an electric drill to drill the marked holes.
  - c) Insert the anchors into the holes.
  - d) Install the mounting plate to the junction box using the mounting screws and further secure it with anchor screws.

### **II. Wiring the Fixture**

1. Safety first! Locate the circuit breaker and switch it off to cut off the power supply to the relevant circuits to ensure there's no electricity running through the wiring.
2. In accordance with local electrical codes, connect the fixture ground wire (bare copper or silver wire) to suitable ground. This may be a green ground screw on the mounting plate or a house wire (green or bare copper wire without insulation).
3. Twist the bare ends of the following pairs of wires together using a wire nut to secure a connection:
  - a) Hot (black) fixture wire to hot power line wire
  - b) Neutral (white) fixture wire to neutral power line wire
4. Carefully tuck all the wires and wire-nut connections into the junction box.

### **III. Installing the Fixture**

1. Mount the fixture onto the mounting plate and secure it in place by installing the fixture screws.
2. Install the shade(s) onto the socket(s) by tightly screwing the shade collar(s) onto them.
3. Screw the bulb(s) into the socket(s). Refer to the socket label for max wattage information.